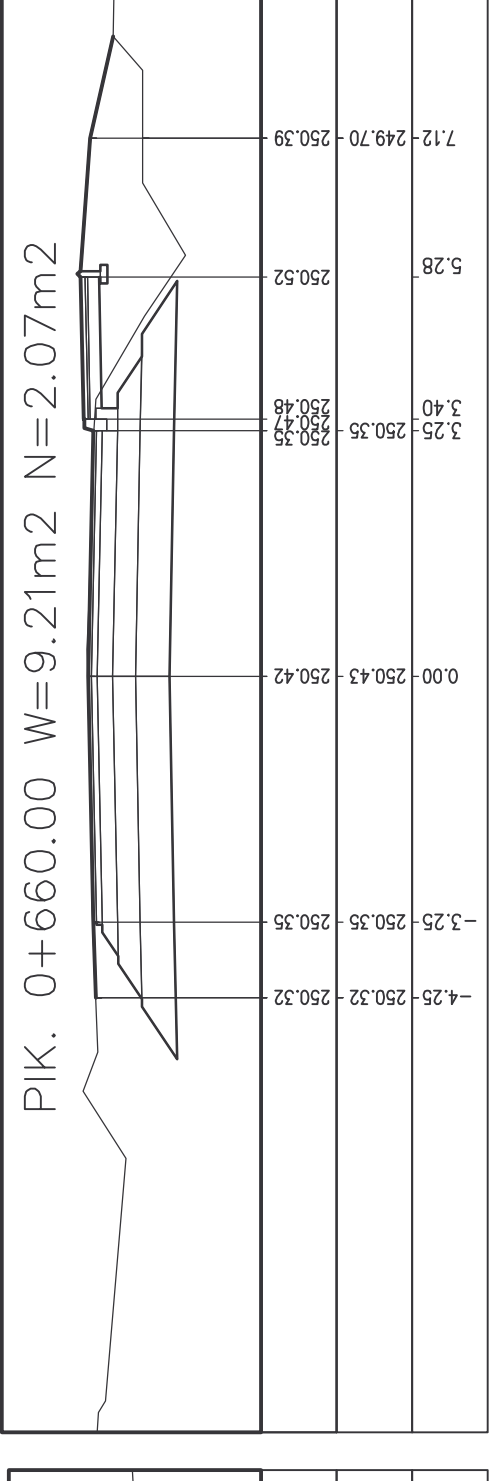
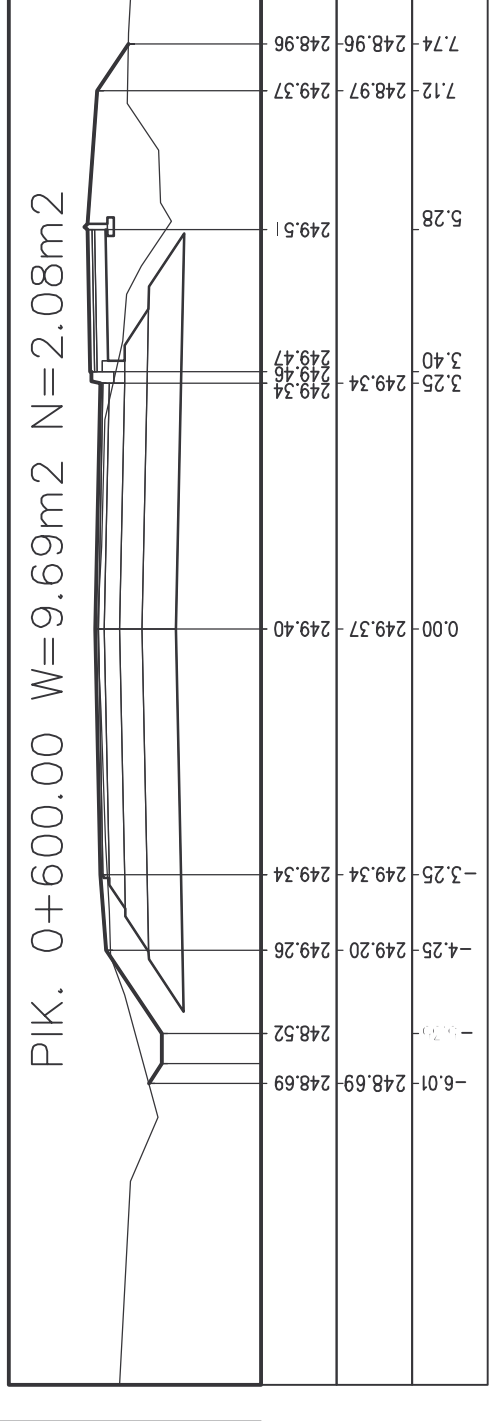
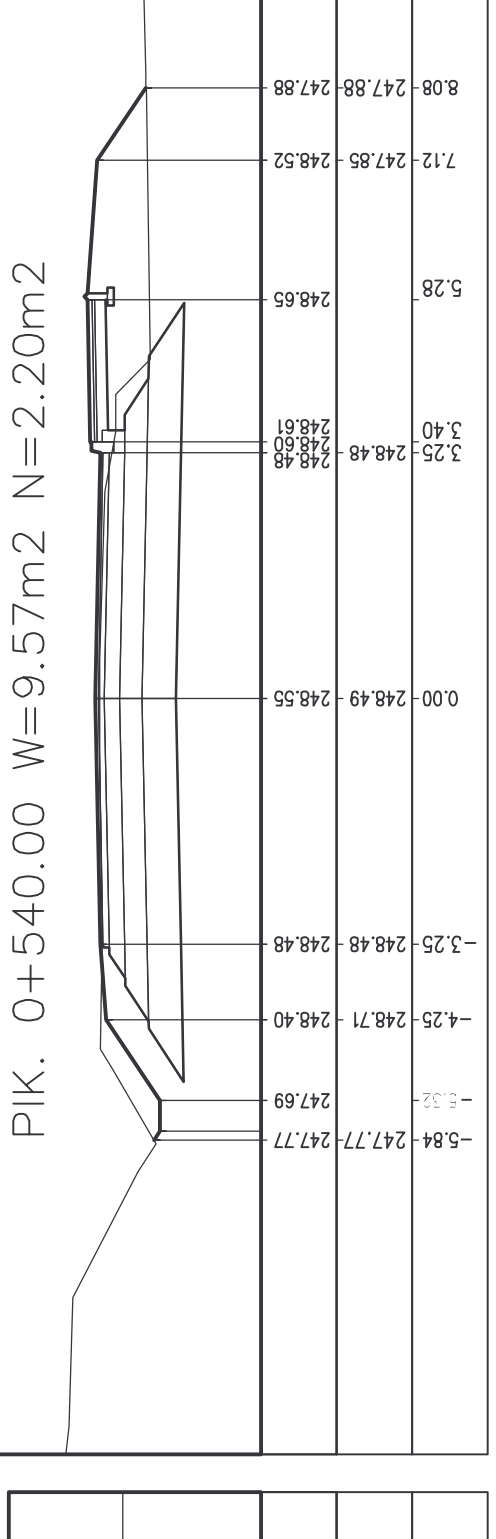
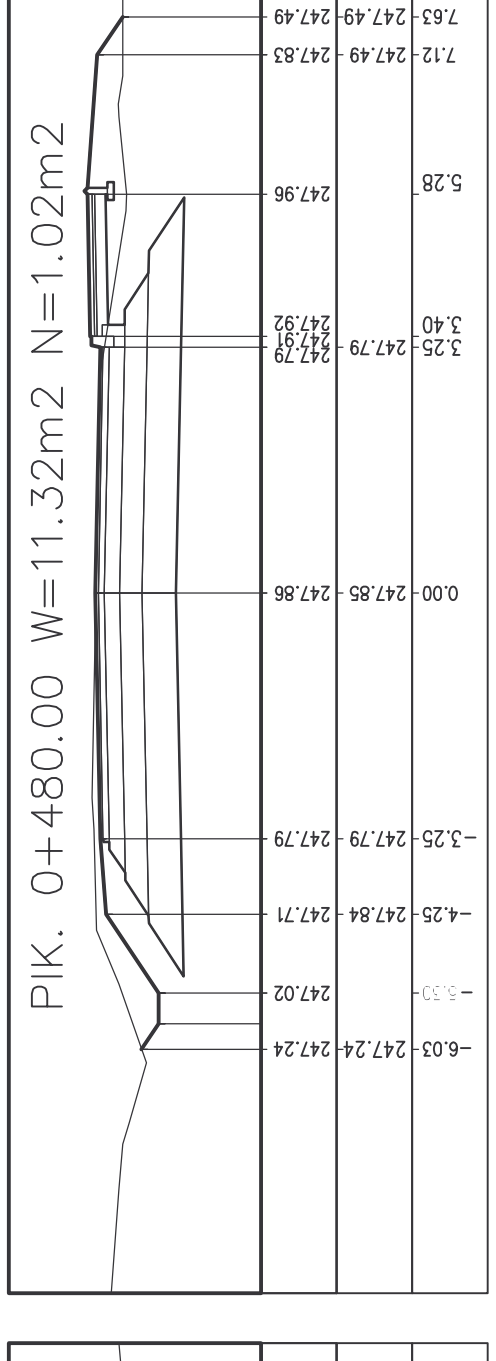
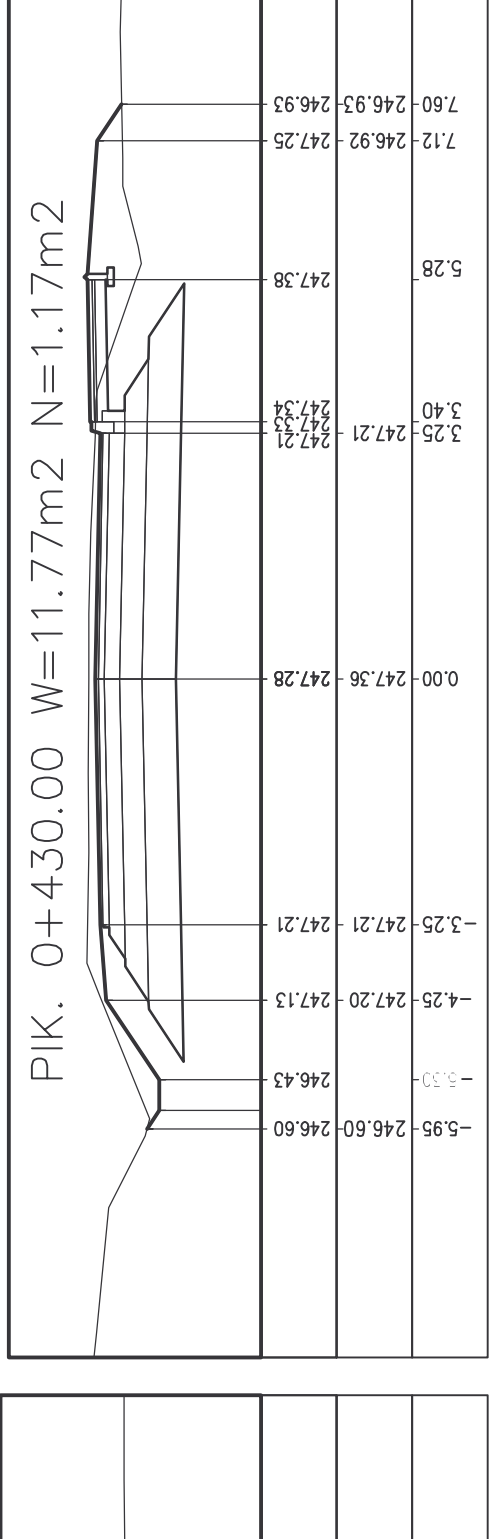
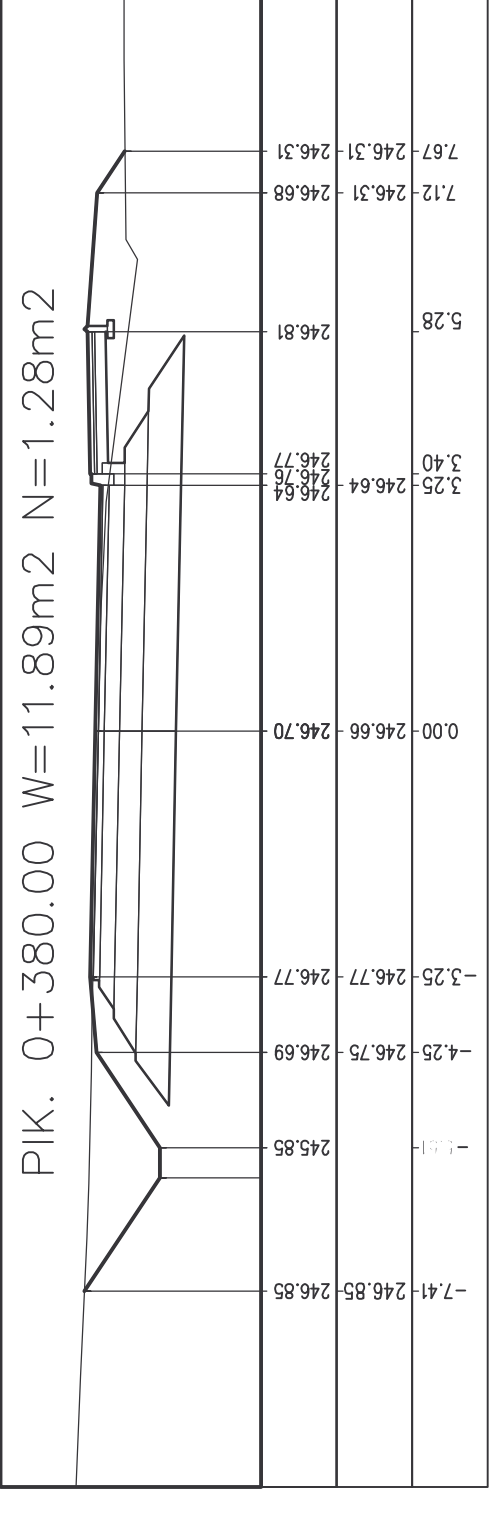
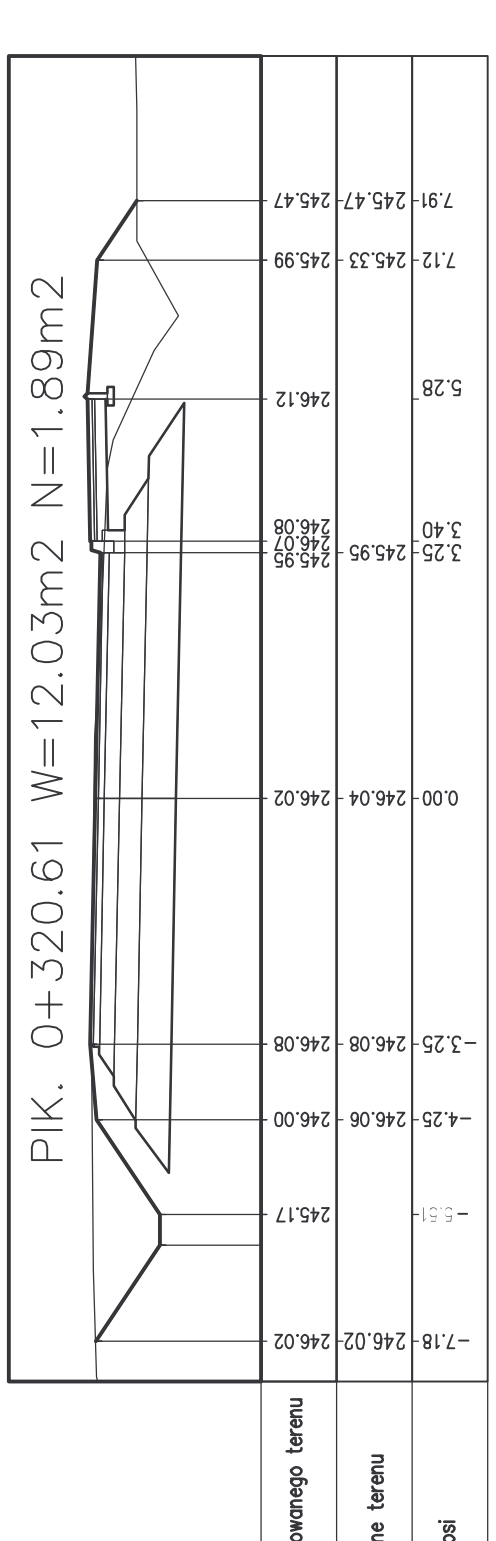
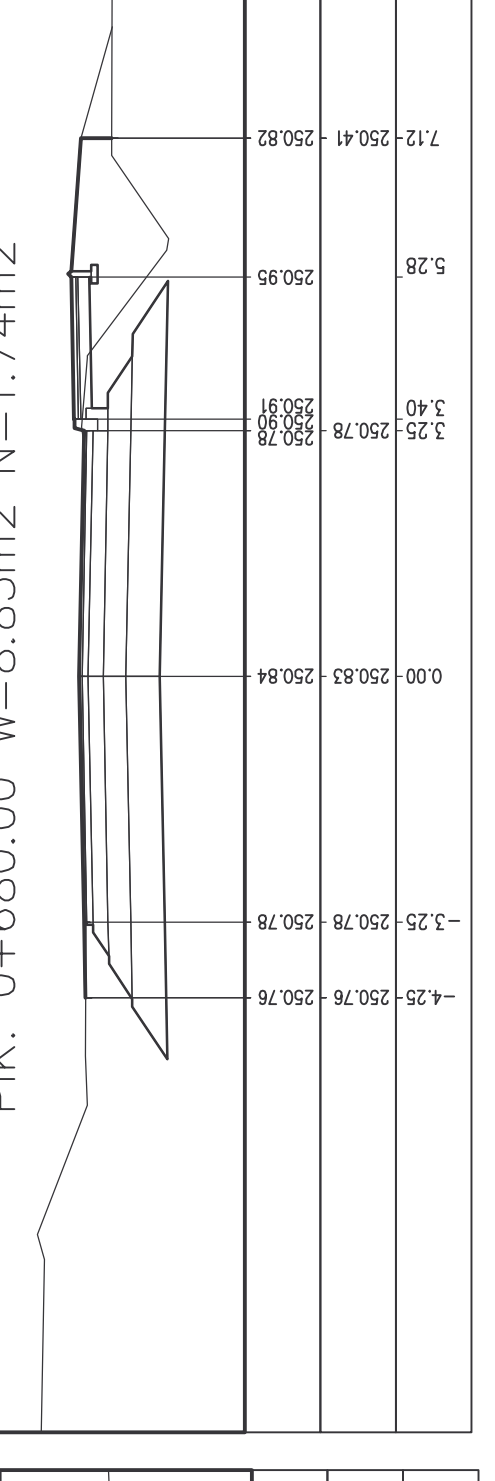
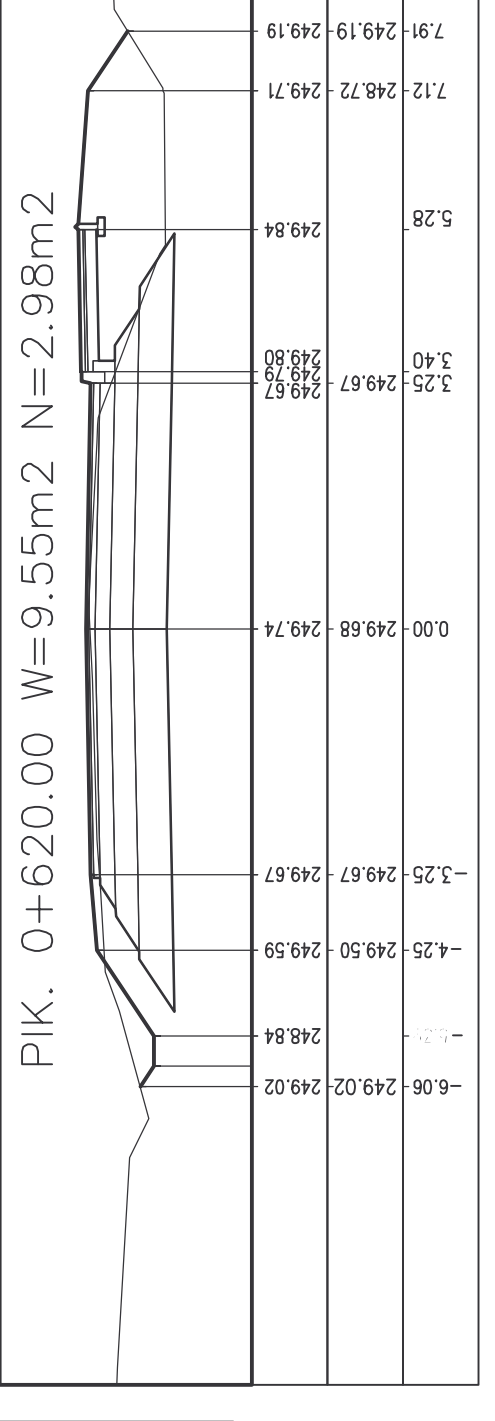
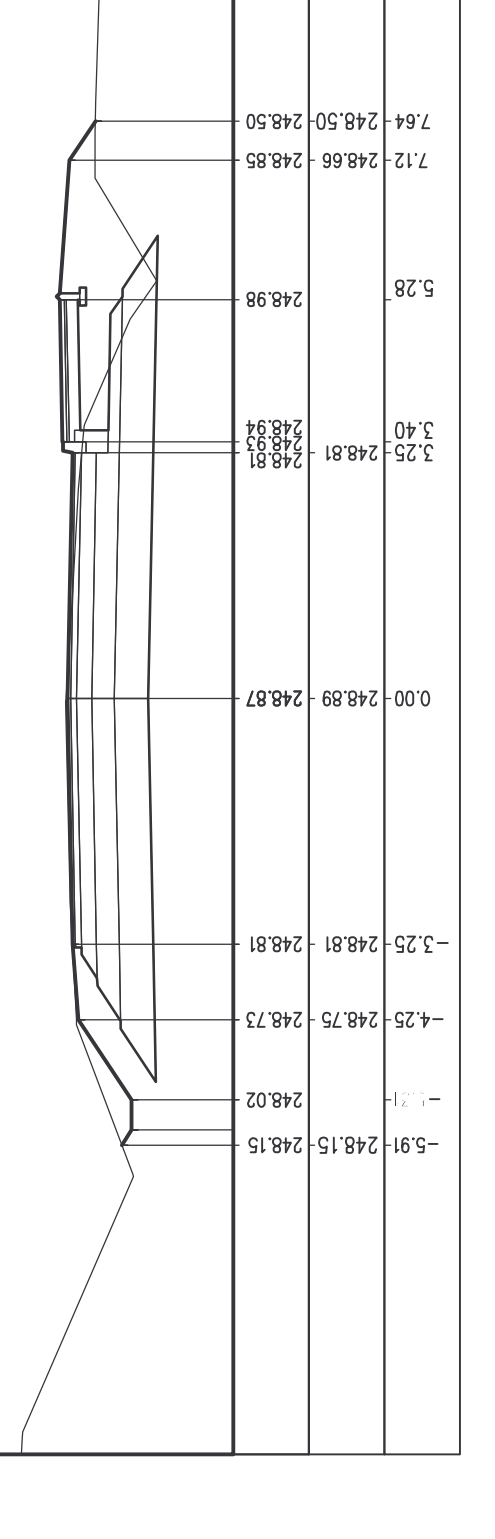
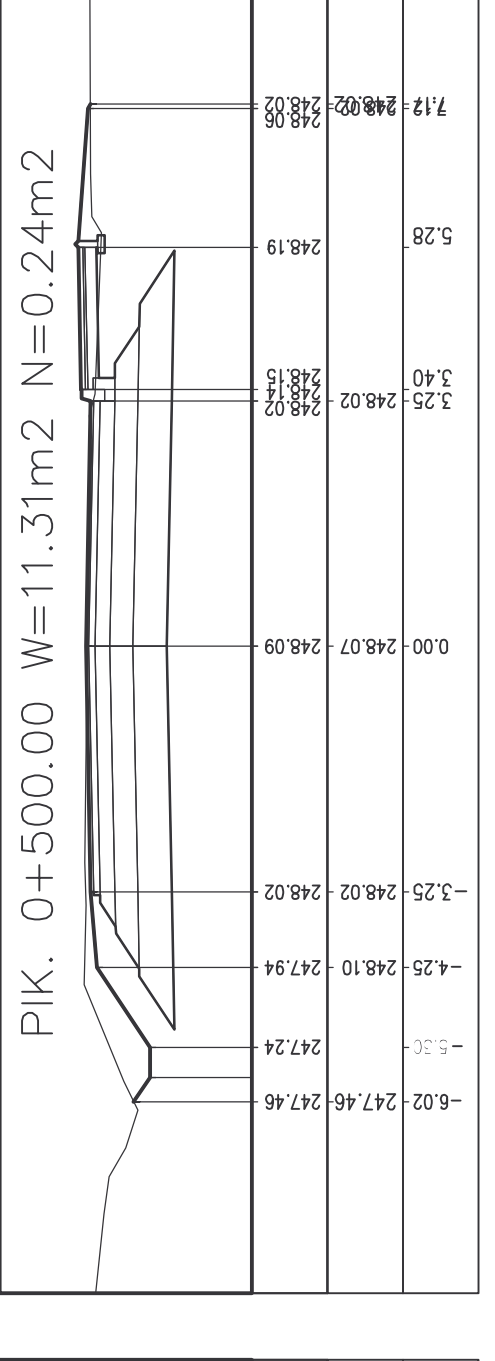
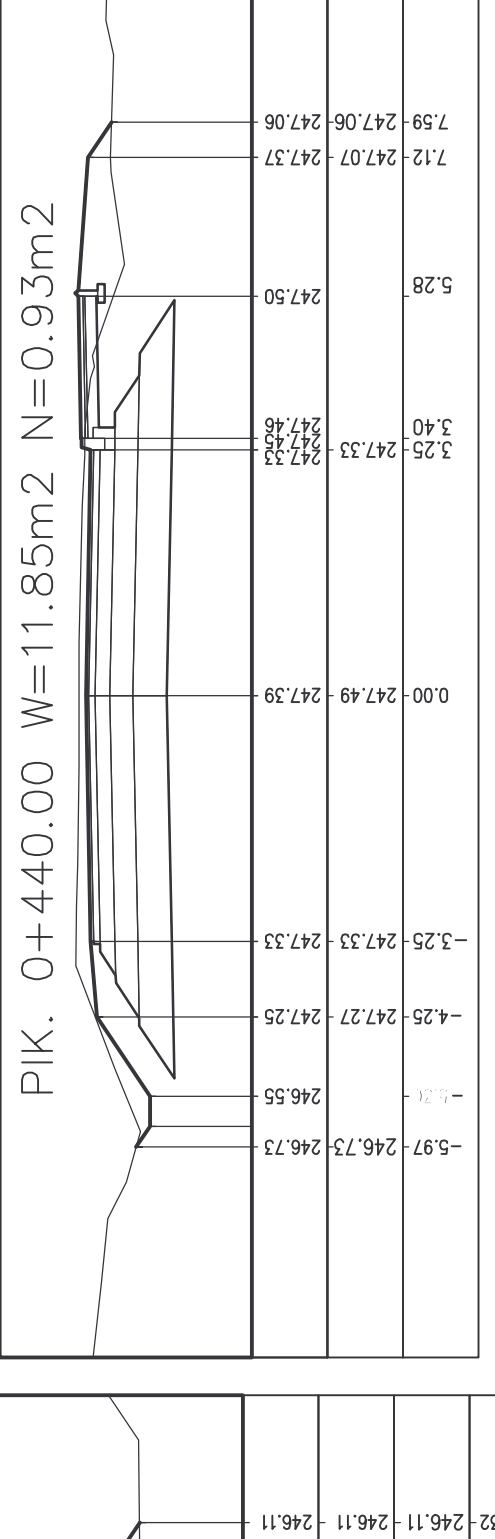
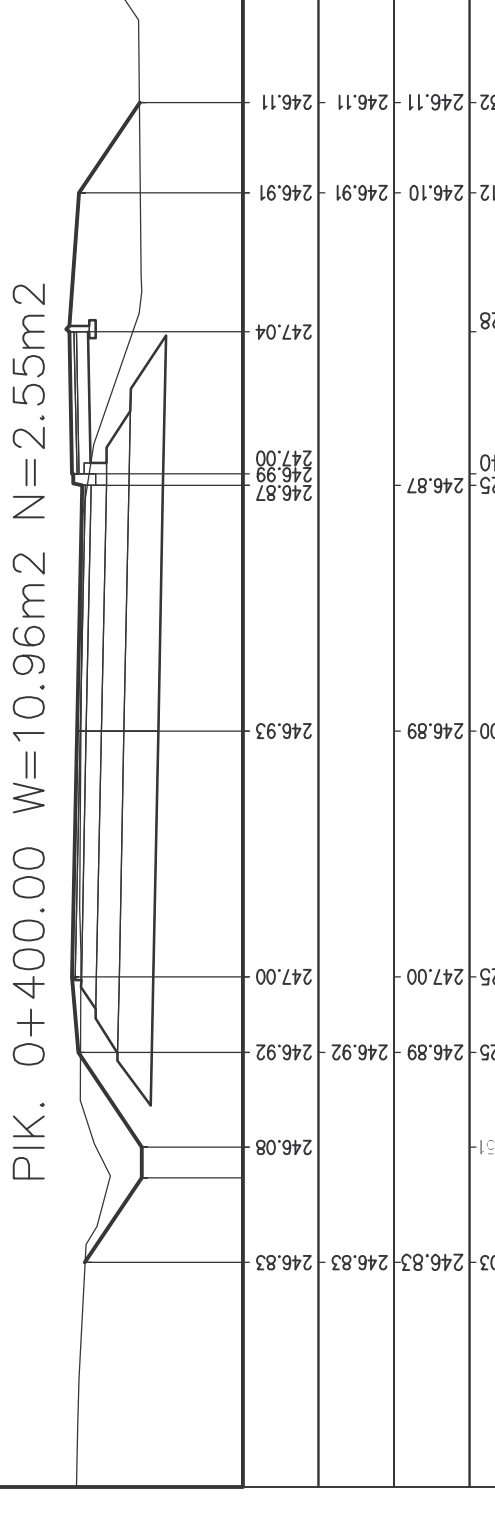
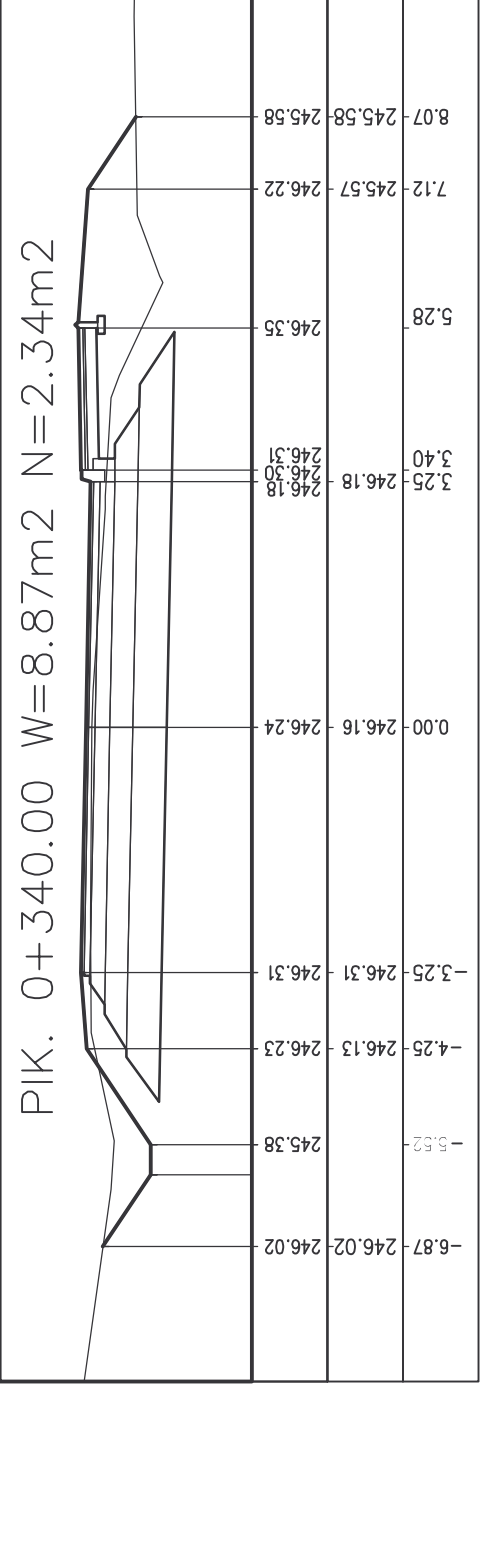
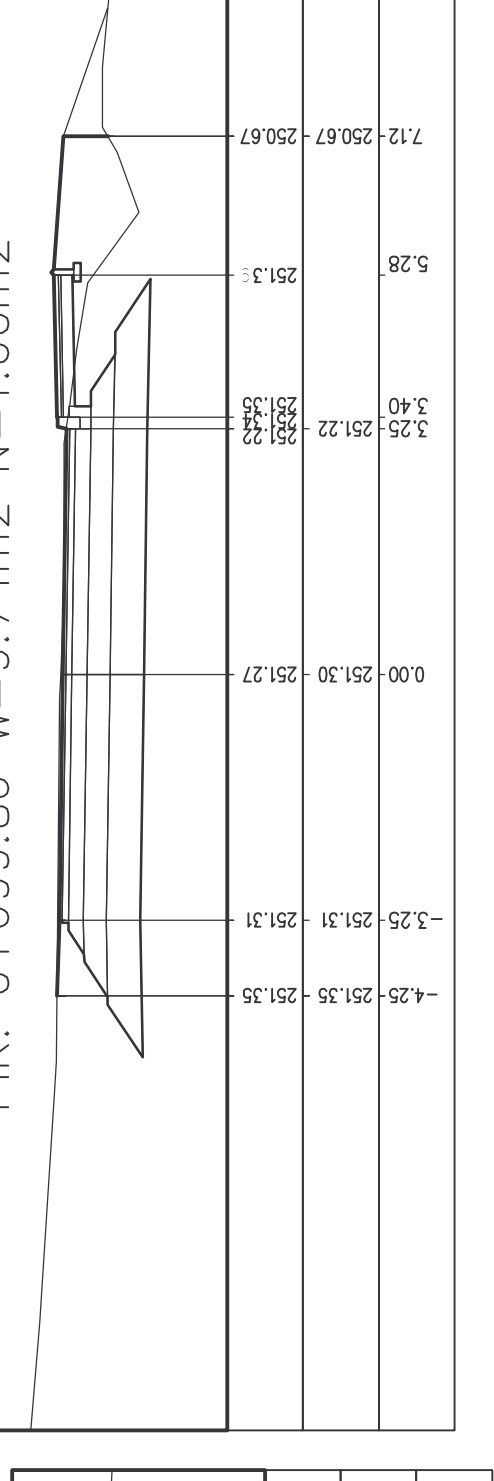
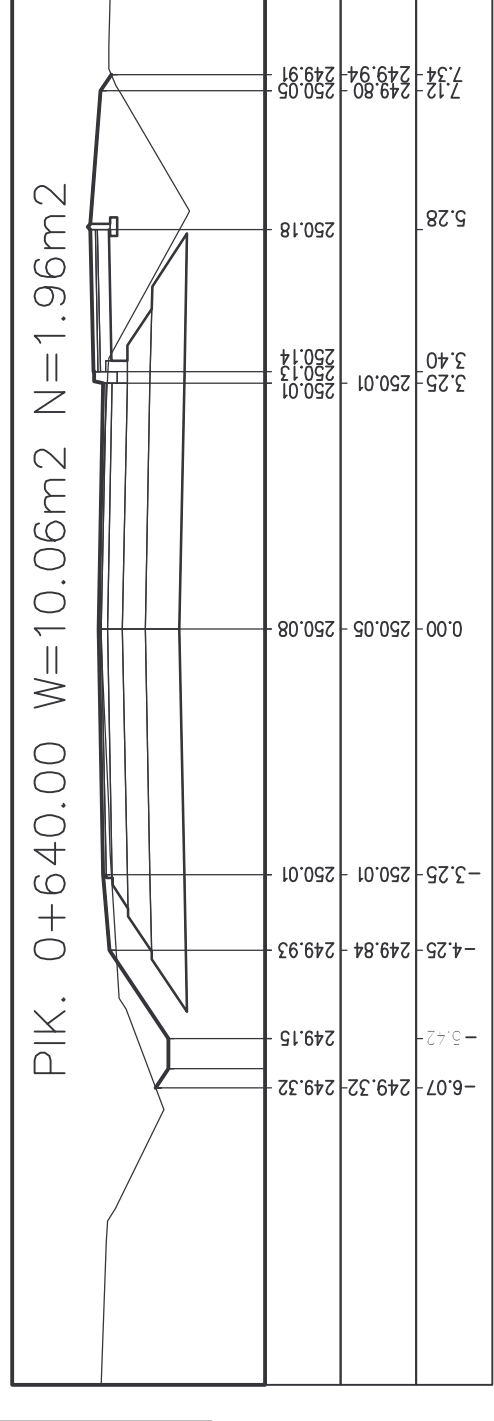
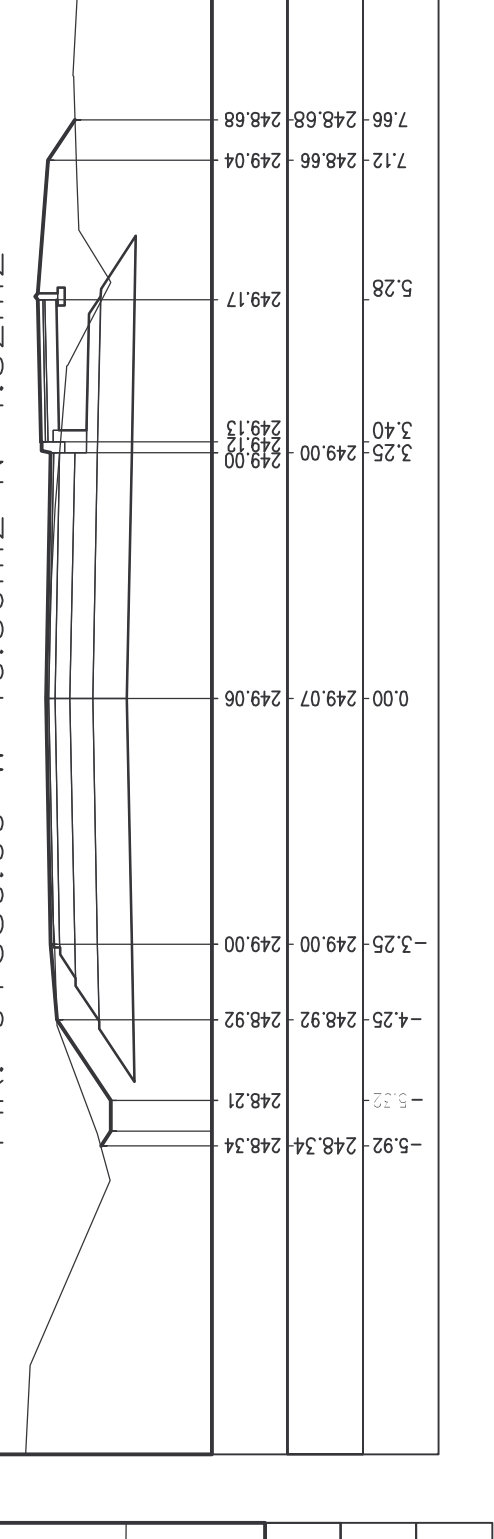
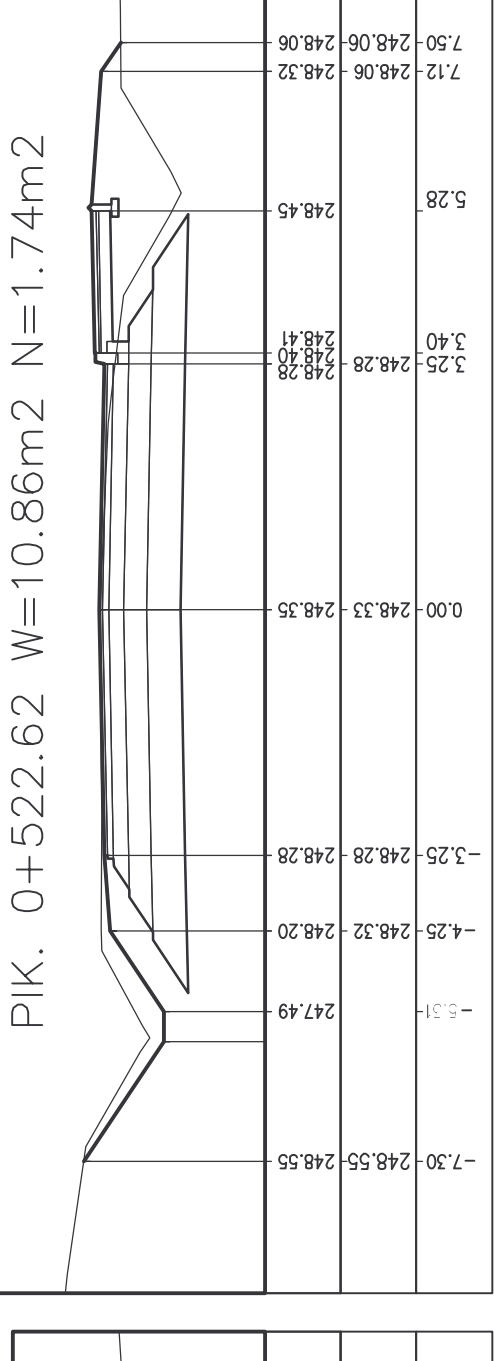
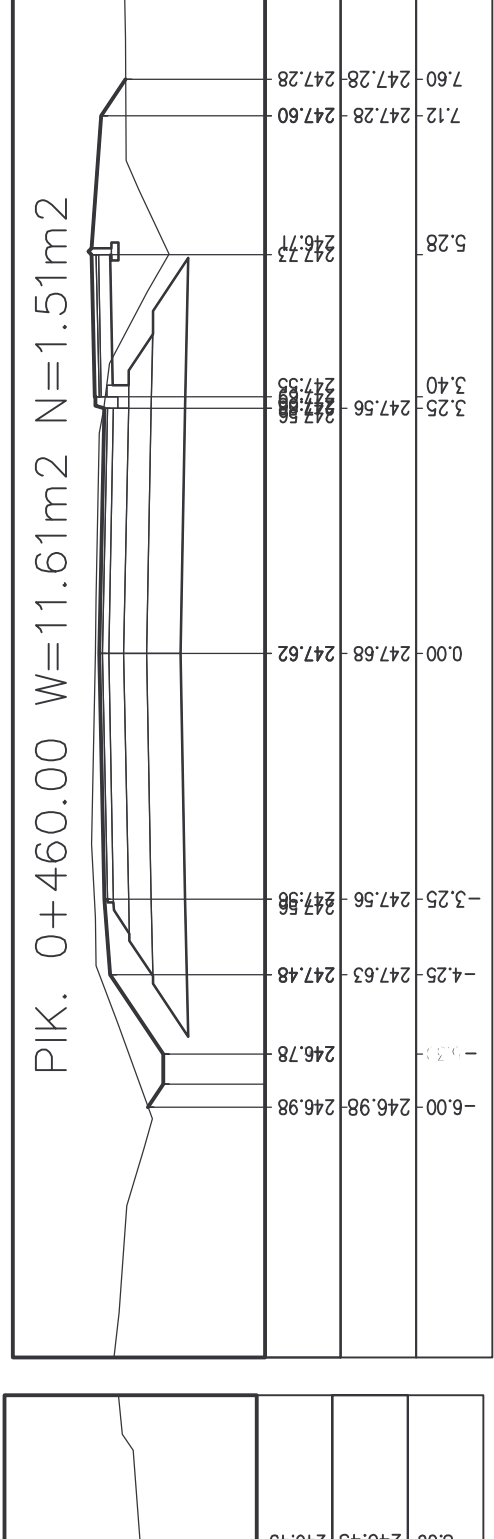
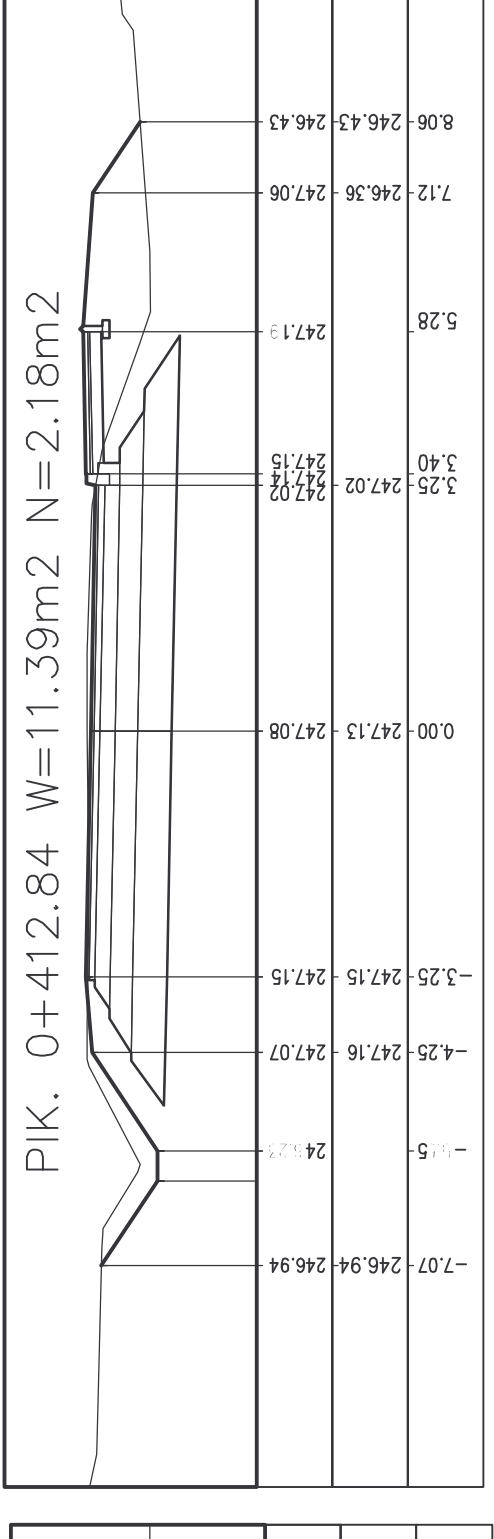
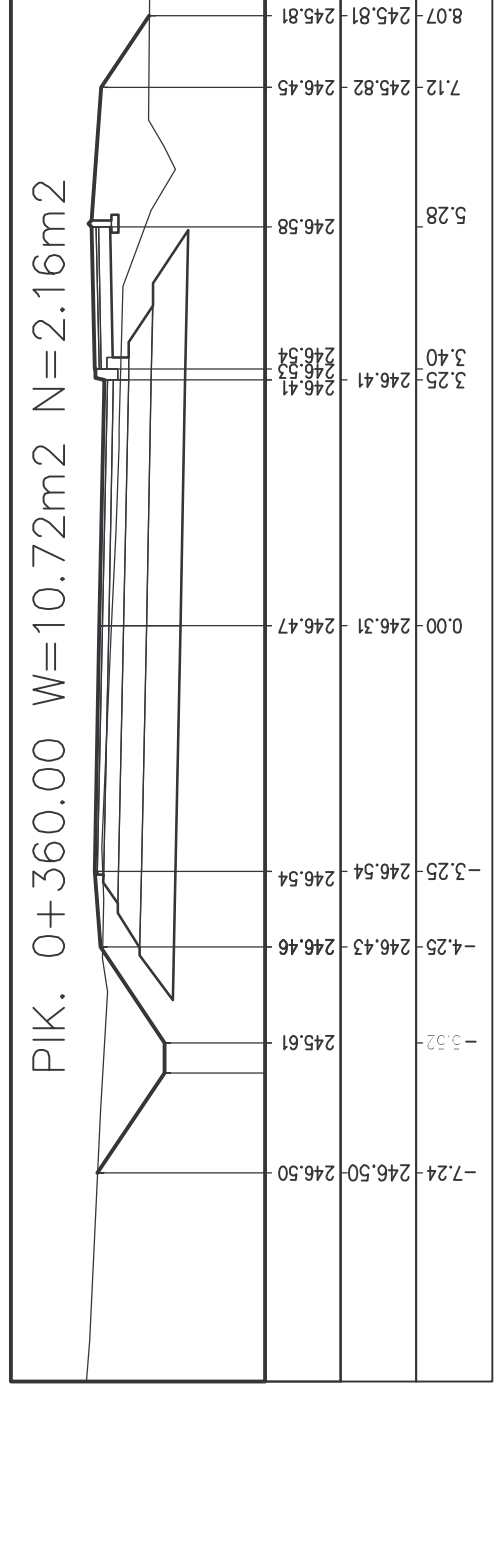


PRZEKROJE POPRZECZNE UL. ŚLĄSKIEJ

od km 0+320.61 do km 0+699.86



Investor:	Gmina Chelm Śląski ul. Konarskiego 2 41-403 Chelm Śląski
Projectant:	Budowa chodnika przy ulicy Śląskiej na odcinku ul. Chelmskiej od ul. Odrozienia w Chelmie Śląskim
Function:	mg i architekt
Projectant:	mgr inż. Olgierd STANECEK
Scale:	1:1000/100
Sheet:	8
Projectant:	mgr inż. Olgierd STANECEK

BiuRO PROJEKTÓW KOMUNALNYCH
ul. Chelmskiej 17/106
41-403 Chelm Śląski
DROGASAN
Anna, Olgierd STANECEK tel./fax 032-224-44-65